



ATLAS TURNİKE SİSTEMLERİ



USER MANUAL



ATLAS TURNİKE SİSTEMLERİ SAN. TİC. LTD. ŞTİ.
Güzelyurt Mah. Ertuğrul Gazi Cad. No:15/B-Esenyurt \ Istanbul- Turkey
www.atlasturnike.com/en

Manufacturing Company Information

Address

Güzelyurt Mah. Ertuğrul Gazi Cad. No:15/B-Esenyurt \ Istanbul-

Tel: 0212 428 13 54 Fax: 0212 428 13 58

Web: www.atlasturnike.com/en

Mail: info@atlasturnike.com , sales@atlasturnike.com

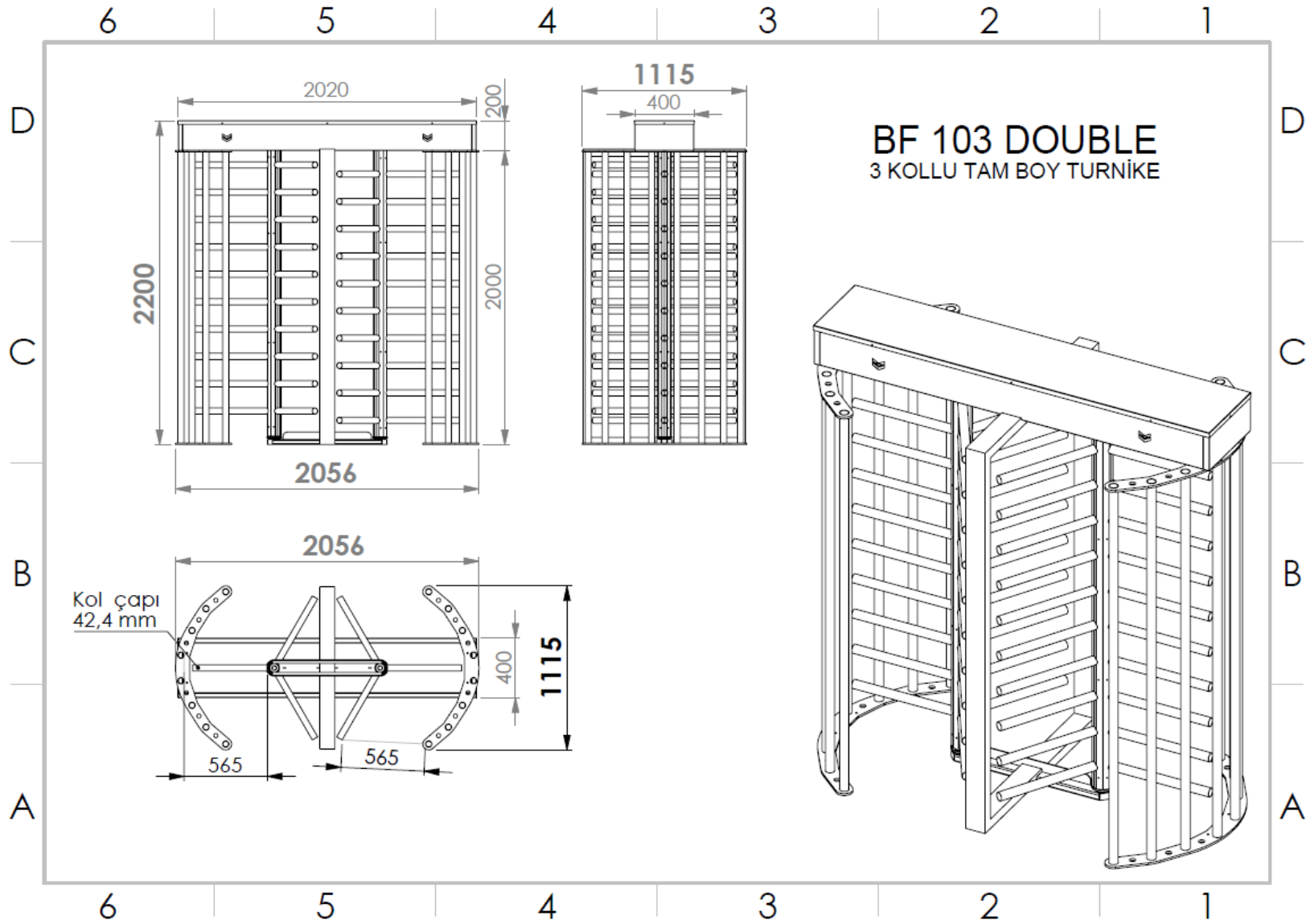


ATLAS BFID103 Double Full Height Turnstile

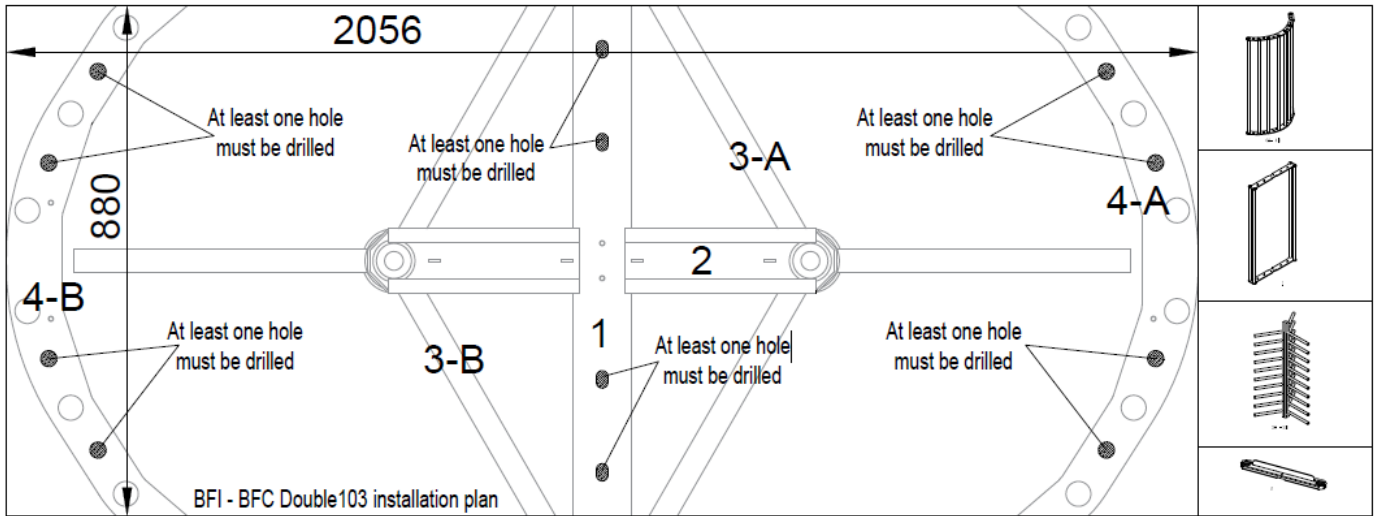


1. General Specifications;

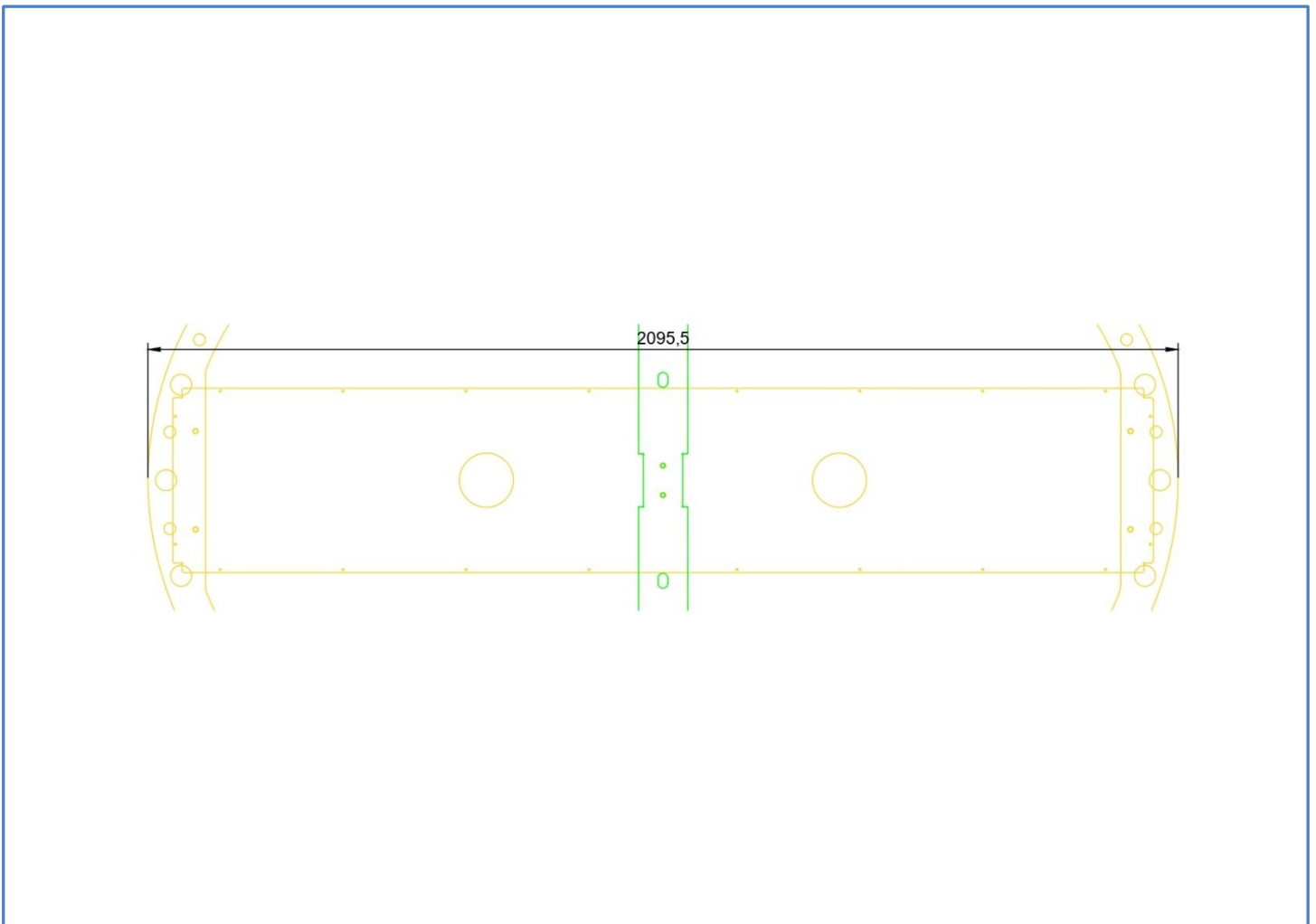
- Chassis: Powder painted 1.5mm mild steel quality. The pedestals are made of 10mm steel.
- Operation: Adjustable in both directions, manual driving.
- Functions: Transition information (A-B 5VDC and B-A 5VDC). Transition time can be adjusted.
- Memory mode. Audible warning. Adjustable transition direction.
- Emergency situation: Fire alarm system turns the arms to idle(NC)
- Power Supply: 100 – 230 VAC, 47-60 Hz
- Power Consumption: 3,7W in transitions, 4W on hold
- Operating Temperature: -10 C / +70 C Optional: With heater -30°
- Passage Speed: Max. 20 People / Minutes + –
- Passage Width: 56cm
- Led Display: Standard in both directions
- Weight: ~ 150 kg
- Security Level : High Security
- Areas of Use : Suitable for indoor and outdoor use.
- Options and Accessories: Push Button, Remote Control, Transition path Led spot lighting, Counter, Thermostat heater



Sample Layout and Wiring Details



TOP VIEW AND OVERALL WIDTH



Board Card Connection and electrical Diagram

S1 - DIP SW

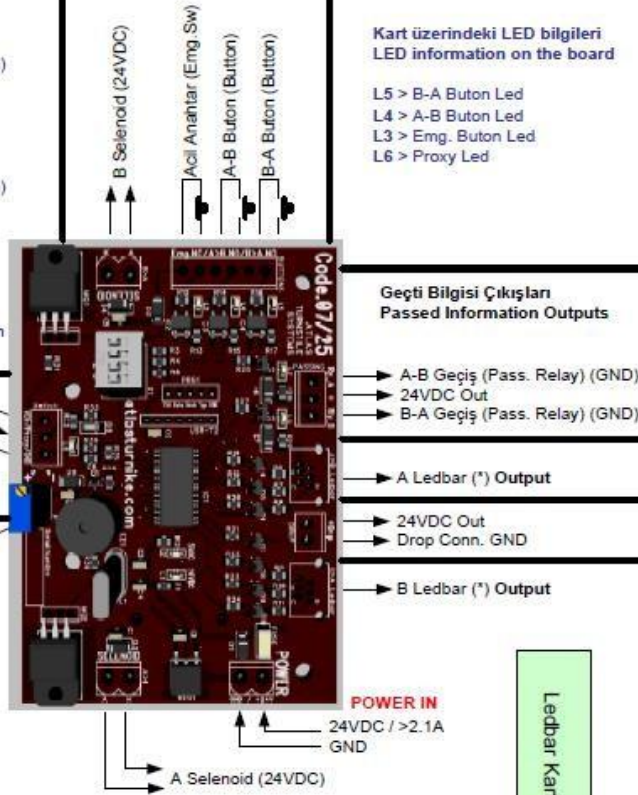
- (1 Off / 2 Off) İki butonlu iki yönlü çalışma
(Two-button, two-way operation)
(1 On / 2 Off) A-B Serbest, B-A Butonlu
(A-B Free, B-A Buttoned)
(1 Off / 2 On) B-A Serbest, A-B Butonlu
(B-A Free, A-B Buttoned)
(1 On / 2 On) Tek butonlu iki yönlü çalışma
(One-button, two-way operation)

(3 On/Off) Selenoid PWM mode.

(4 On/Off) Buzzer ses modudur. İkaz seslerinin duyulması için sesli modda kullanılmasını tavsiye ederiz.
Buzzer sound mode. We recommend using it in audible mode to hear warning sounds.

PNP Proxy Sensor / Kahve (Brown)
PNP Proxy Sensor / Siyah(Black)
PNP Proxy Sensor / Mavi (Blue)
veya / or
Mekanik Switch NC

P1 Trimpot
0 ile 40sn. arasında ayarlanabilir otomatik kapanma zamanı.
0 to 40s. Auto shut off time adjustable between.



Kart üzerindeki LED bilgileri
LED information on the board

- L5 > B-A Buton Led
L4 > A-B Buton Led
L3 > Emg. Buton Led
L6 > Proxy Led

Geçti Bilgisi Çıktıları
Passed Information Outputs

- A-B Geçiş (Pass. Relay) (GND)
24VDC Out
B-A Geçiş (Pass. Relay) (GND)

A Ledbar (*) Output

- 24VDC Out
Drop Conn. GND

B Ledbar (*) Output

POWER IN
24VDC / >2.1A
GND

A Selenoid (24VDC)

Turnike Kartı - Turnstile Board



- 1- 12VDC
- 2- GND
- 3- Ledbar Yeşil (Green)
- 4- 5VDC
- 5- Ledbar Kırmızı (Red)
- 6- Ledbar Mavi (Blue)

6-5-4-3-2-1

Daima Çıkış - Always Output

Ledbar Kartı - Ledbar Board



- 1- 12VDC
- 2- Boş (Free)
- 3- Ledbar Yeşil (Green)
- 4- Boş (Free)
- 5- Ledbar Kırmızı (Red)
- 6- Ledbar Mavi (Blue)

6-5-4-3-2-1

Daima Giriş - Always Input

Ledbar Kartı - Ledbar Board

6-5-4-3-2-1

NOT: DIP Switch fabrika ayarlarında kullanılmalıdır. Kesinlikle DEĞİŞTİRİLMEMELİDİR.
NOT: DIP Switch should be used in factory settings. It should NEVER be CHANGED.

Mechanism

